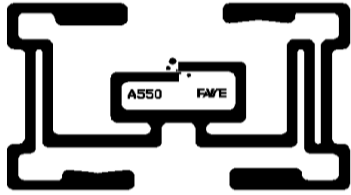




# A550

The RFID Inlay pattern is optimized general purpose and achieves exceptional performance in multiple applications, including case tagging, the apparel industry for applications such as asset tracking and inventory management, pallet placards, and baggage tags.



## Key Features

- Inventory Management
- Item Level Tracking
- Supply Chain Management and Operation
- EPC Class 1 Gen 2 / ISO 18000-6C
- 96 EPC bits extensible to 480 bits or up to 512 bits of user memory

## RF Features

Operating frequency	860~960MHz
Mode of operation	Passive (battery free)

## Electrical Characteristics

Protocol	EPC Class1 Gen2/ISO 18000-6C
Memory	96 bits EPC number

## Inlay Material

Antenna	Aluminum
Substrate	PET film

## Inlay Roll Format/Finishing

Core inner diameter	76.2mm (3.000")
Core material	Chipboard or Favite approved material
Max roll outer diameter	300mm (11.811")

## ESD & Inlay Handling

Human body model	+/- 2KV
------------------	---------

## Environmental Specification

Shelf life	2 years @25°C / 60%RH
Temperature limits	Storage: -25°C to +50°C Operating: -50°C to +85°C
Humidity	20% to 90%RH Non-condensing
RoHS	2011 / 65 / EU compliant

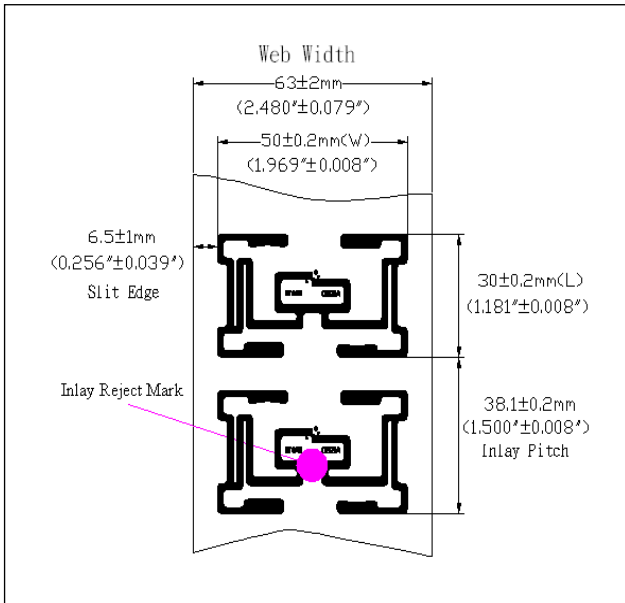
## Dry Inlay Specification

Antenna dimension (W x L)	50mm x 30mm 1.969" x 1.181"
Standard pitch	38.1mm 1.500"
Web width	63mm 2.480"
Slit edge	6.5mm 0.256"
Max units per roll	16,000

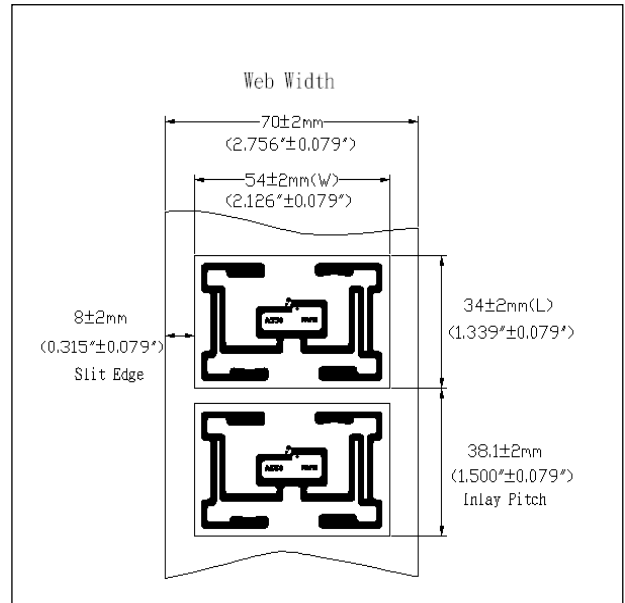
## Wet Inlay Specification

Inlay dimension (W x L)	54mm x 34mm 2.126" x 1.339"
Standard pitch	38.1mm 1.500"
Web width	70mm 2.756"
Inlay to liner adhesive	Acrylic adhesive
Liner material	White glassine release paper
Max units per roll	10,000

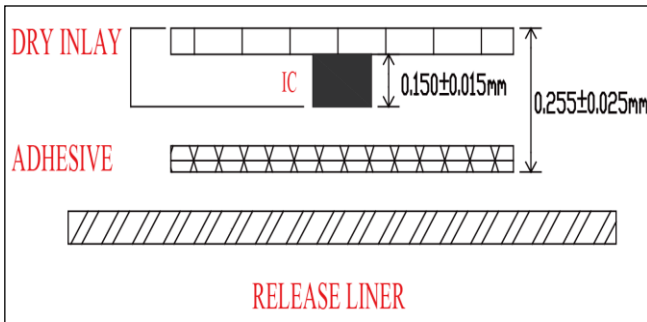
# A550 Inlay Roll Dimensions



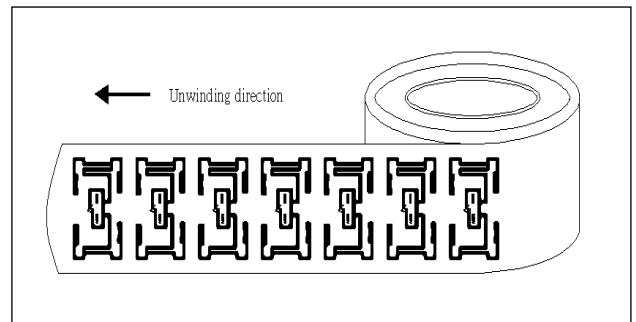
A550 Dry Inlay (IC Face Up)



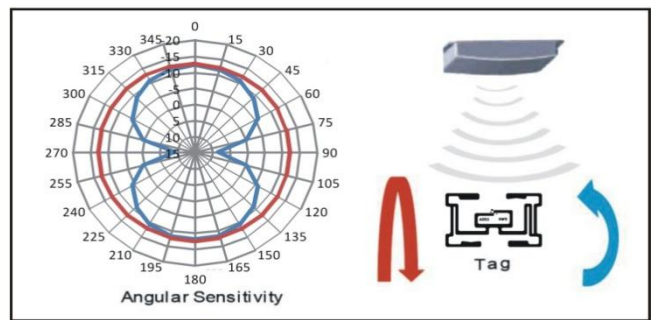
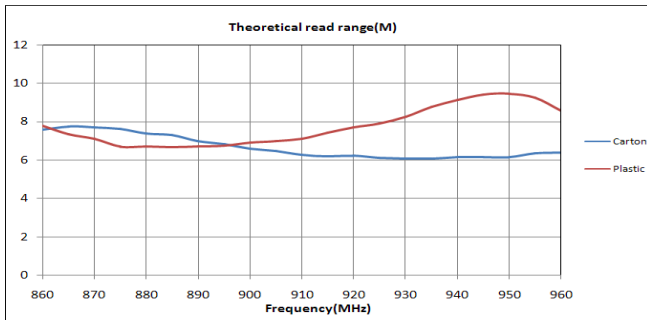
A550 Wet Inlay (IC Face Down)



A550 wet inlay construction



A550 wet inlay orientation



All information has been calculated and derived from transmitters with a 2W ERP output power level. All graphs are for general reference: performance may vary in realistic implementation.

Favite Inc. reserves the right to change its products or services or to discontinue any product or service at any time without prior notice.



Favite Inc. RFID Division Addr: No. 176, Taihe Rd., Jhubei City, Hsinchu County 30267, Taiwan.  
 Tel: 886-3-5545988 / Fax: 886-3-5545982 / Website: <http://rfid.favite.com> / E-mail: [rfid@favite.com](mailto:rfid@favite.com)  
 2015/07/15